



COLORADO Total: 1153 sq. ft. / 107.13 m² - 1375 sq. ft. / 127.75 m²

THE TIMBER BLOCK SYSTEM, ITS COMPONENTS AND INTELLECTUAL PROPERTIES ARE PROTECTED BY INTERNATIONAL PATENT AND PATENTED PENDING LAWS. ©2015 Timber Block Inc. The illustrations can differ from the actual model. Architectural works relative to Timber Block homes are subject to international copyright law. The simple fact of using or copying the plans of Timber Block Inc./Thermostructure inc. in whole or in part or to fabricate or build directly or indirectly a home based, in whole or in part, on plans, scale-models or model homes of the former, without the express consent of Thermostructure Inc. might constitute an infringement to international copyright laws.

TIMBERBLOCK

Engineered Homes for Better Living

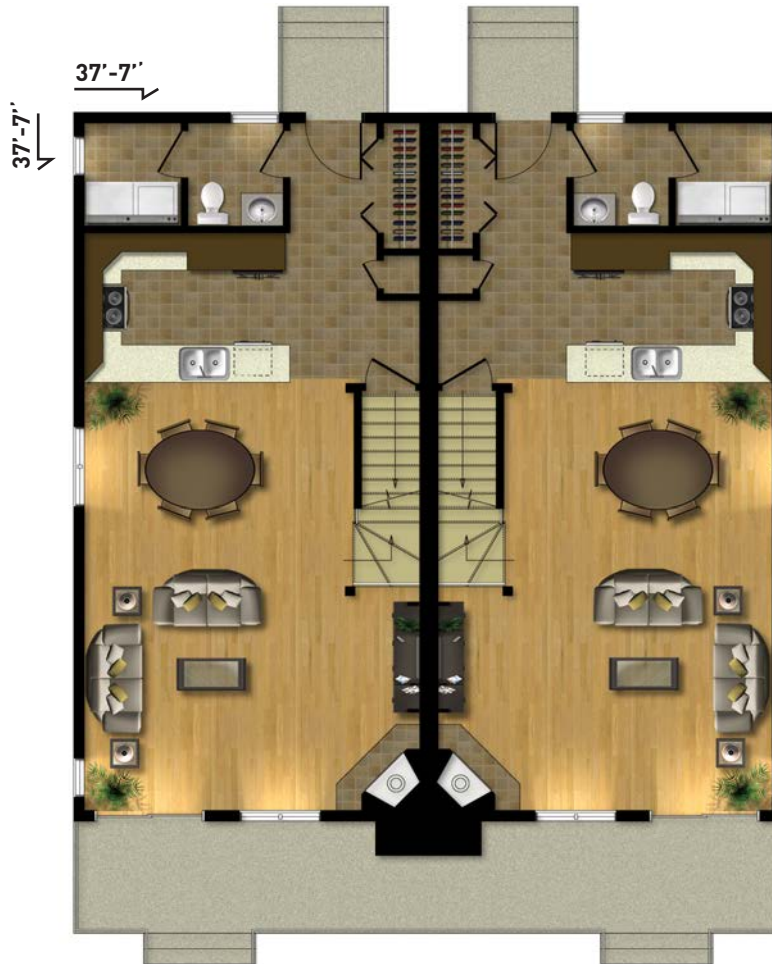
CLASSIC

COLORADO

TOTAL: 1153 sq. ft. / 107.13 m² - 1375 sq. ft. / 127.75 m²

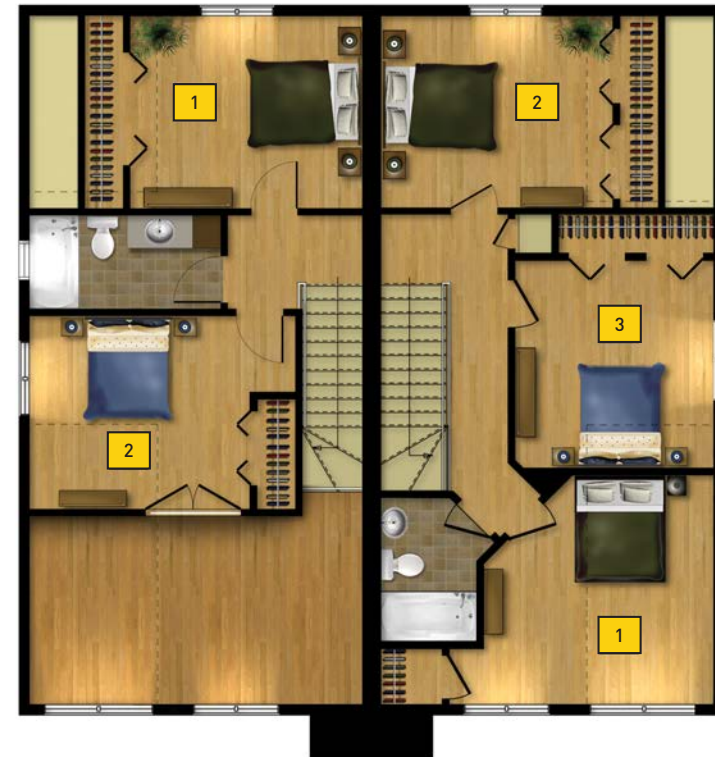
Room (floor)	Dimensions
Dining room	14'-3" X 11'-2" / 4,34m X 3,40m
Kitchen	10'-10" X 8'-0" / 3,30m X 2,44m
Living room	17'-9" X 11'-2" / 5,41m X 3,40m
Bedroom (1) Opt.1	11'-8" X 10'-1" / 3,56m X 3,07m
Bedroom (2) Opt.1	11'-5" X 9'-7" / 3,48m X 2,92m
Bedroom (1) Opt.2	12'-4" X 12'-4" / 3,76m X 3,76m
Bedroom (2) Opt.2	11'-8" X 10'-2" / 3,56m X 3,10m
Bedroom (3) Opt.2	10'-8" X 11'-1" / 3,25m X 3,38m

MAIN FLOOR
707 sq. ft. / 65.68 m²



SECOND FLOOR - 1
446 sq. ft. / 41.44 m²

SECOND FLOOR - 2
668 sq. ft. / 62.06 m²



CLASSIC SERIES

Custom floor plans available

www.timberblock.com / info@timberblock.com

1-866-929-5647 Connelly Springs, NC / 705-436-1924 Innisfil, ON / 450-431-7676 Mirabel, QC

