



## **OKANAGAN** Total: 1283 sq. ft. / 119.20 m<sup>2</sup>

THE TIMBER BLOCK SYSTEM, ITS COMPONENTS AND INTELLECTUAL PROPERTIES ARE PROTECTED BY INTERNATIONAL PATENT AND PATENTED PENDING LAWS. ©2015 Timber Block Inc. The illustrations can differ from the actual model. Architectural works relative to Timber Block homes are subject to international copyright law. The simple fact of using or copying the plans of Timber Block Inc./Thermostructure inc. in whole or in part or to fabricate or build directly or indirectly a home based, in whole or in part, on plans, scale-models or model homes of the former, without the express consent of Thermostructure Inc. might constitute an infringement to international copyright laws.

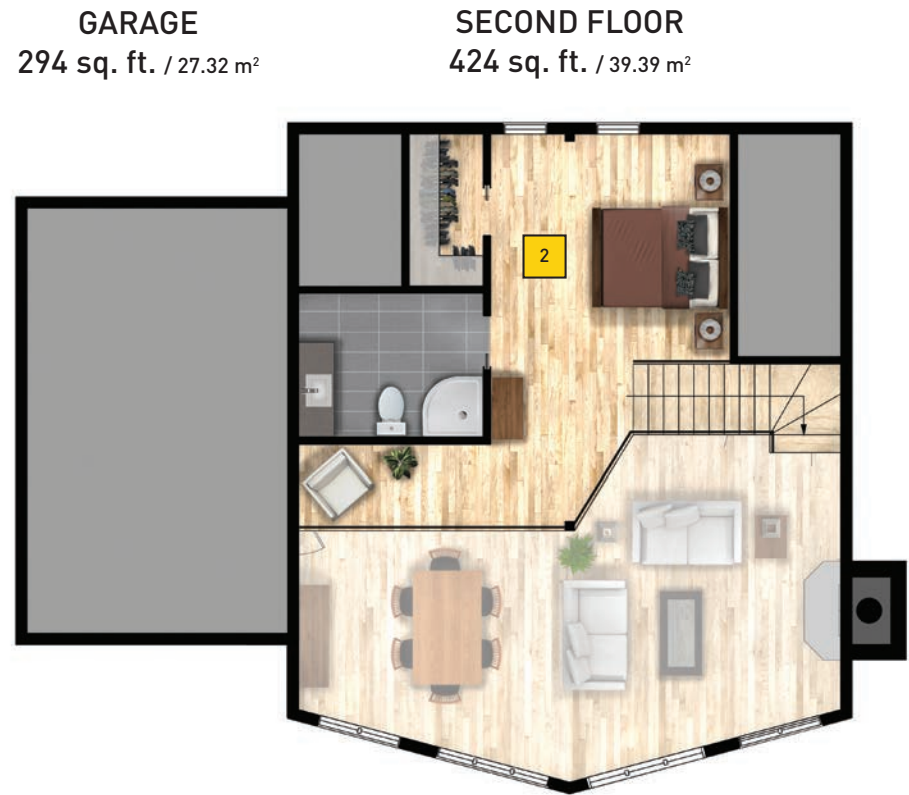
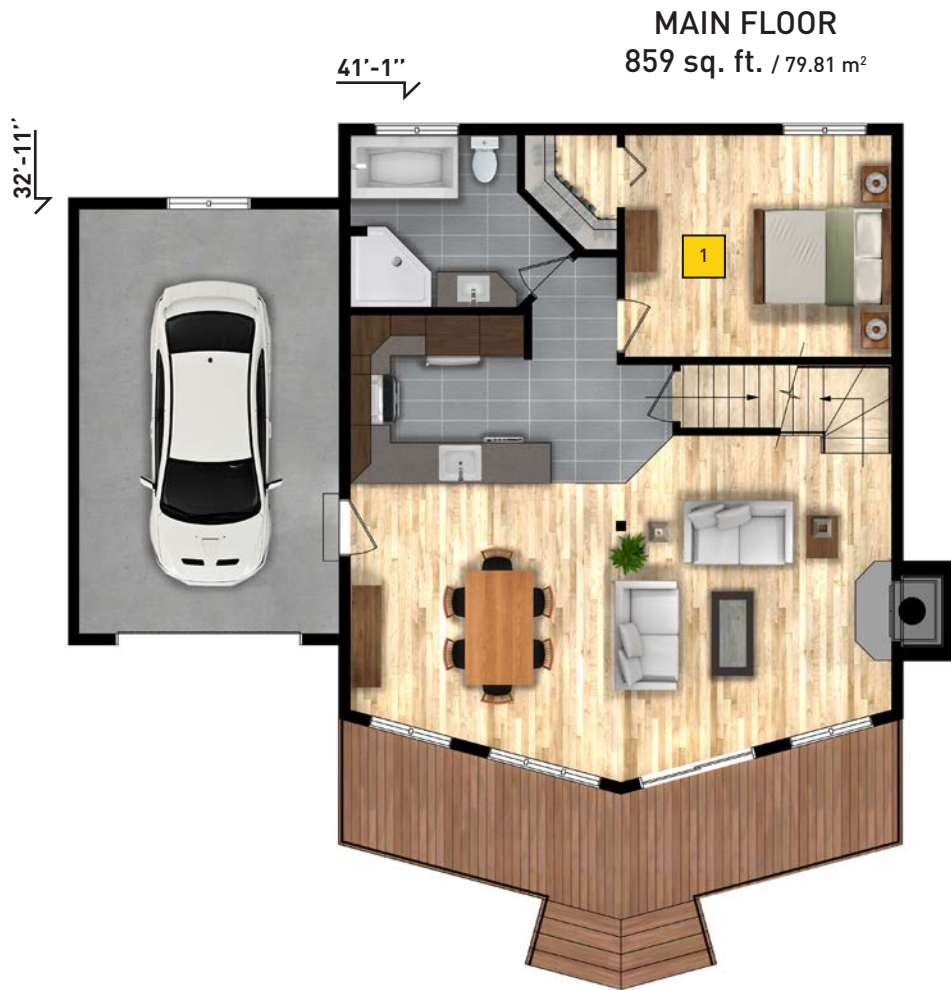
**TIMBERBLOCK**  
  
Engineered Homes for Better Living



## OKANAGAN

Room (floor)	Dimensions
Dining room	13'-5" X 14'-9" / 4,09m X 4,50m
Kitchen	10'-0" X 8'-4" / 3,05m X 2,54m
Living room	13'-5" X 16'-5" / 4,09m X 5,00m
Bedroom (1)	13'-2" X 11'-0" / 4,01m X 3,35m
Bedroom (2)	11'-10" X 11'-4" / 3,61m X 3,45m

**TOTAL: 1283 sq. ft.** / 119.20 m<sup>2</sup>



### CLASSIC SERIES

Custom floor plans available

[www.timberblock.com](http://www.timberblock.com) / [info@timberblock.com](mailto:info@timberblock.com)

1-866-929-5647 Connelly Springs, NC / 705-436-1924 Innisfil, ON / 450-431-7676 Mirabel, QC

