



CONTEMPORARY

MILANO

TOTAL: 2917 ft²



3



3+1



option



2 c



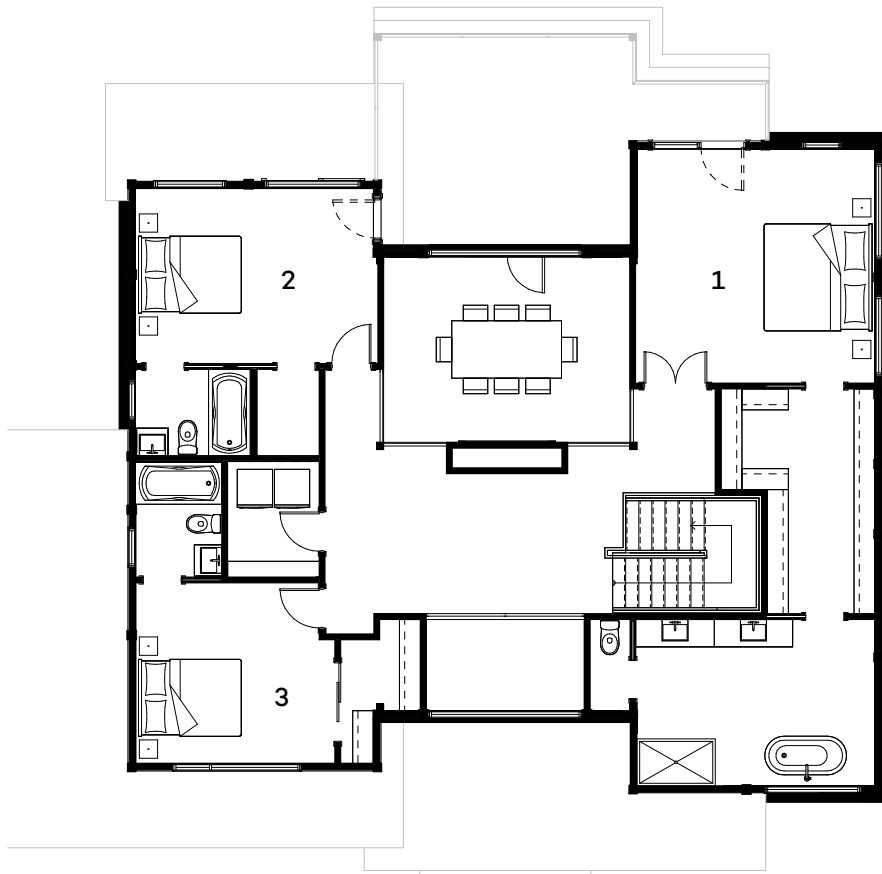
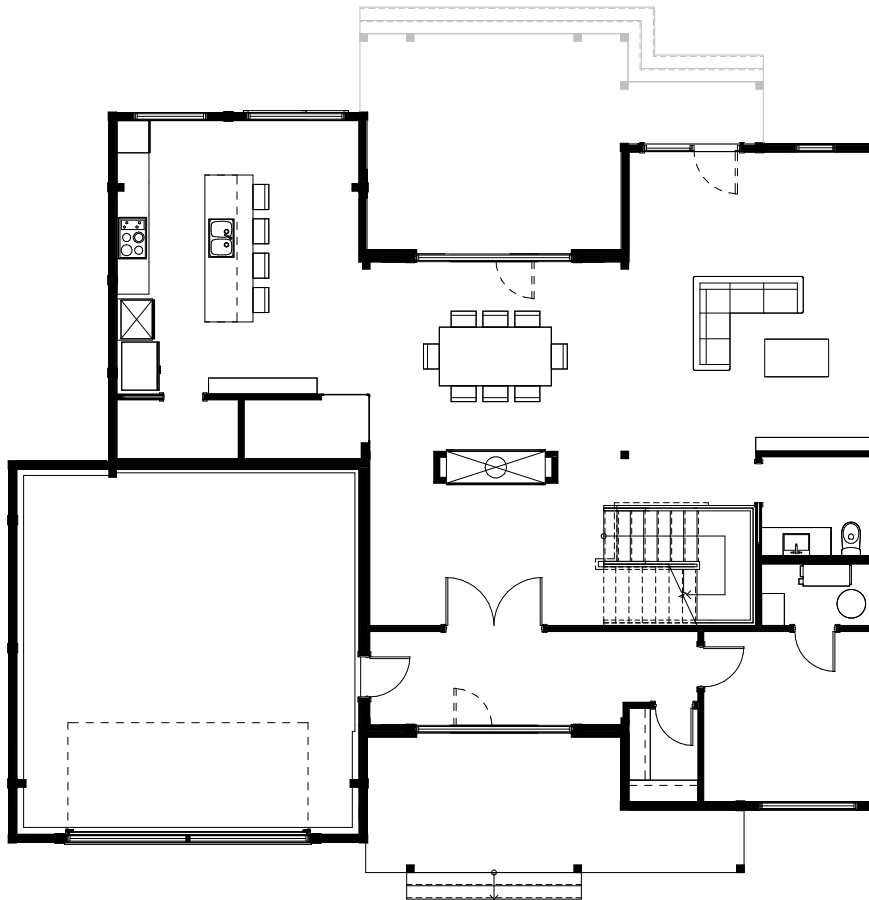
option



TIMBERBLOCK

Engineered Homes for Better Living

THE TIMBER BLOCK SYSTEM, ITS COMPONENTS AND INTELLECTUAL PROPERTIES ARE PROTECTED BY INTERNATIONAL PATENT AND PATENTED PENDING LAWS.
©2021 Timber Block Inc. The illustrations can differ from the actual model. Architectural works relative to Timber Block homes are subject to international copyright law. The simple fact of using or copying the plans of Timber Block Inc/Thermostrostructure inc. in whole or in part or to fabricate or build directly or indirectly a home based, in whole or in part, on plans, scale-models or model homes of the former, without the express consent of Thermostrostructure Inc. might constitute an infringement to international copyright laws. consent of Thermostrostructure Inc. might constitute an infringement to international copyright laws.



KITCHEN 15'-2" X 17'-1"	BATHROOM (1st) 15'-8" X 10'-7" irr	BEDROOM # 1 15'-2" X 14'-11"	DRESSING-ROOM walk-in (1st) 6'-10" X 14'-4"
DINING ROOM 15'-8" X 11'-10"	BATHROOM (2nd) 7'-5" X 5'-6"	BEDROOM # 2 15'-2" X 11'-2"	DRESSING-ROOM walk-in (2nd) 4'-0" X 5'-6"
LIVING ROOM 15'-2" X 18'-10"	BATHROOM (2nd) 5'-6" X 7'-5"	BEDROOM # 3 12'-9" X 11'-6" irr	DRESSING-ROOM walk-in (2nd) 5'-1" X 9'-2"
POWDER ROOM (1st) 6'-10" X 6'-2"	LAUNDRY (2nd) 5'-10" X 7'-5"	OFFICE (1st) 10'-5" X 10'-8"	