



CLASSIC

VEGA

TOTAL: 1982 ft²



2



2+1



option



option



1

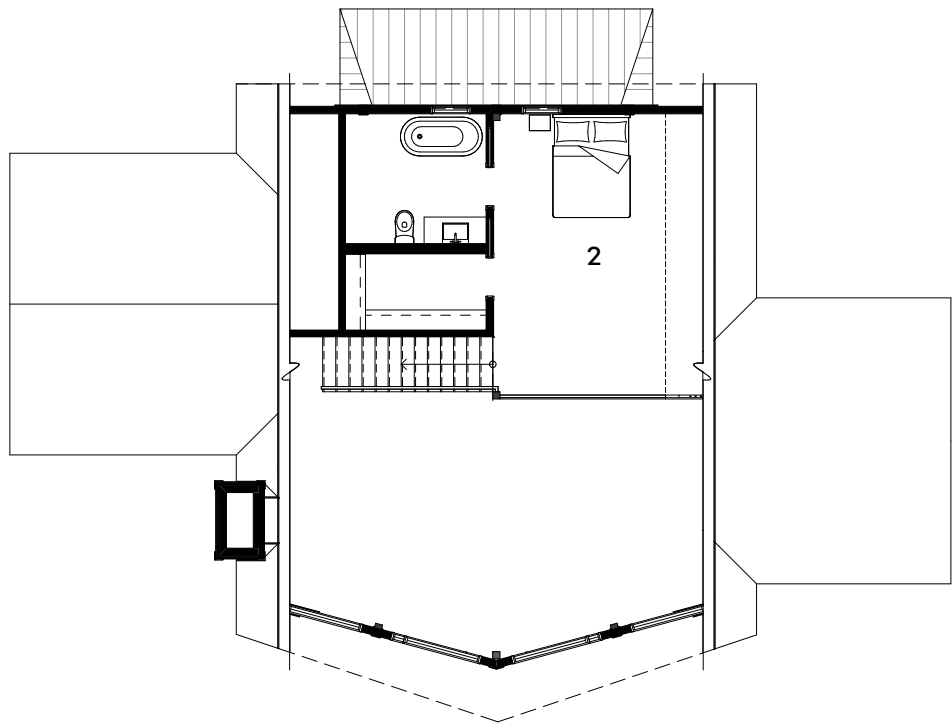
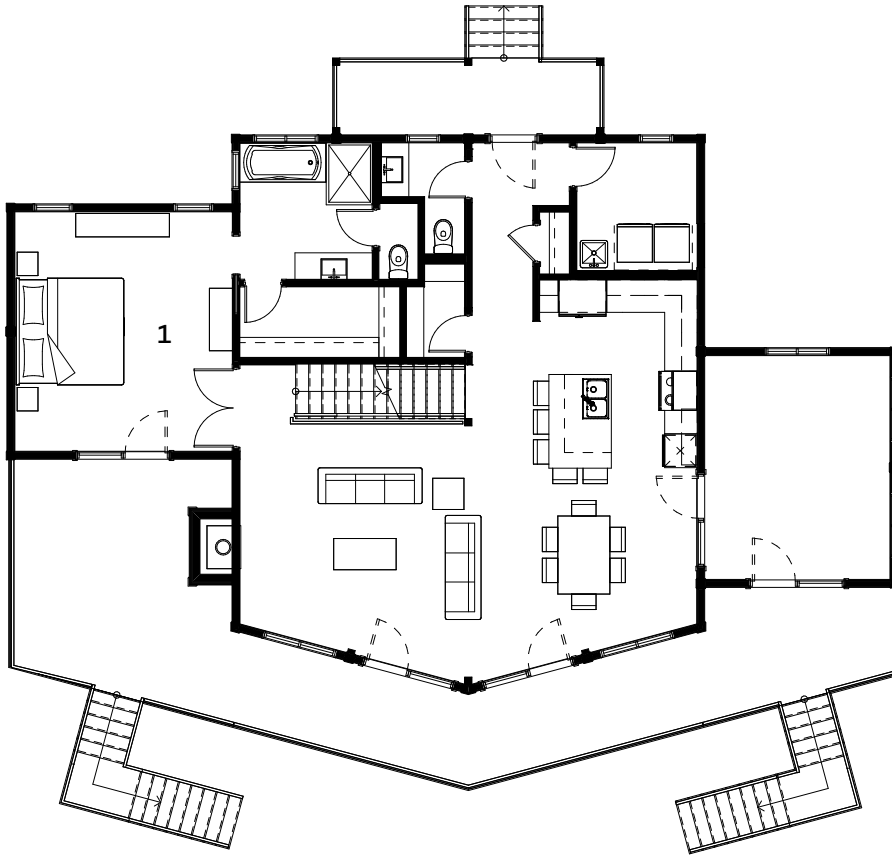


TIMBERBLOCK

Engineered Homes for Better Living

THE TIMBER BLOCK SYSTEM, ITS COMPONENTS AND INTELLECTUAL PROPERTIES ARE PROTECTED BY INTERNATIONAL PATENT AND PATENTED PENDING LAWS.

©2022 Timber Block Inc. The illustrations can differ from the actual model. Architectural works relative to Timber Block homes are subject to international copyright law. The simple fact of using or copying the plans of Timber Block Inc./ Thermosturture inc. in whole or in part or to fabricate or build directly or indirectly a home based, in whole or in part, on plans, scale-models or model homes of the former, without the express consent of Thermosturture Inc. might constitute an infringement to international copyright laws. consent of Thermosturture Inc. might constitute an infringement to international copyright laws.



Dimensions may be subject to slight changes without notice. Please contact Sales for more information.



KITCHEN 9'-9" X 10'-9"	BATHROOM 9'-5" X 8'-2"	DRESSING-ROOM walk-in (master) 9'-0" X 4'-1"
DINING ROOM 14'-8" X 15'-7"	PANTRY 5'-0" X 5'-3"	DRESSING-ROOM walk-in 9'-5" X 5'-2"
LIVING ROOM 14'-8" X 17'-7"	LAUNDRY 6'-0" X 8'-5"	COVERED DECK 17'-5" X 5'-0"
BATHROOM 9'-0" X 9'-5"	BEDROOM # 1 14'-1" X 15'-5"	VERANDA 4 SEASONS 11'-11" X 14'-5"
POWDER ROOM 3'-0" X 8'-5"	BEDROOM # 2 14'-11" X 21'-0"	