



CRAFTSMAN

STONEHAM 1

TOTAL: 2556 ft²



4



3+1



option



option



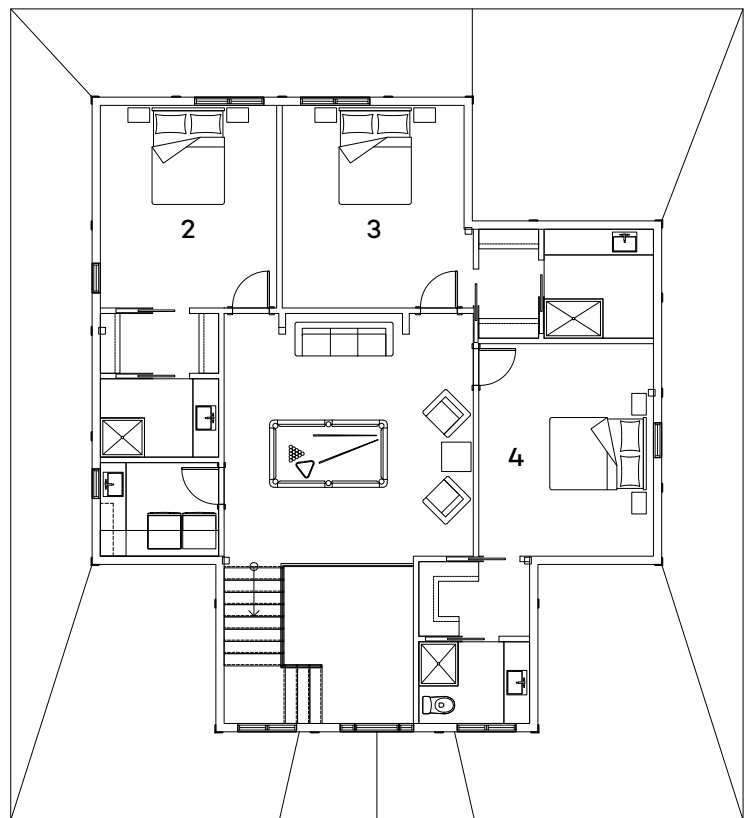
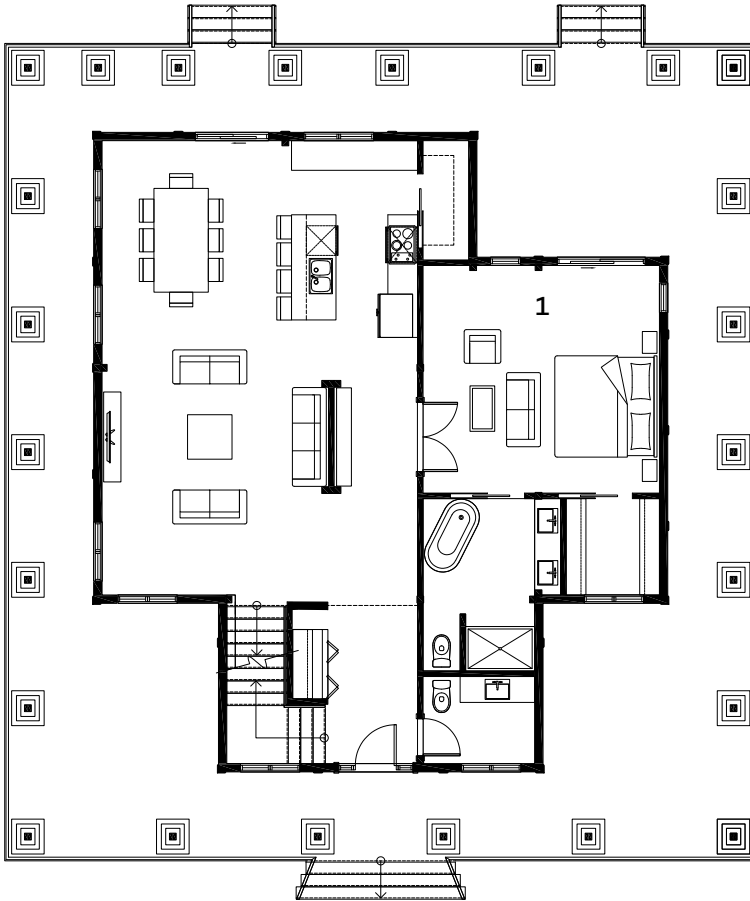
option



TIMBERBLOCK

Engineered Homes for Better Living

THE TIMBER BLOCK SYSTEM, ITS COMPONENTS AND INTELLECTUAL PROPERTIES ARE PROTECTED BY INTERNATIONAL PATENT AND PATENTED PENDING LAWS.
©2021 Timber Block Inc. The illustrations can differ from the actual model. Architectural works relative to Timber Block homes are subject to international copyright law. The simple fact of using or copying the plans of Timber Block Inc/Thermostructure inc. in whole or in part or to fabricate or build directly or indirectly a home based, in whole or in part, on plans, scale-models or model homes of the former, without the express consent of Thermostructure Inc. might constitute an infringement to international copyright laws. consent of Thermostructure Inc. might constitute an infringement to international copyright laws.



Dimensions may be subject to slight changes without notice. Please contact Sales for more information.



KITCHEN
8'-6" X 12'-1"

DINING ROOM
13'-1" X 13'-1"

LIVING ROOM
15'-0" X 16'-9"

FAMILY ROOM (2nd)
16'-11" X 16'-6"

HALL
6'-0" X 5'-8"

BATHROOM (#1)
9'-3" X 11'-7"

POWDER ROOM (1st)
7'-6" X 5'-10"

BATHROOM (#2)
8'-0" X 5'-4"

BATHROOM (#3)
7'-5" X 7'-5"

BATHROOM (#4)
7'-6" X 5'-7"

BEDROOM # 1
15'-11" X 15'-4"

BEDROOM # 2
12'-0" X 13'-9"

BEDROOM # 3
12'-4" X 13'-9"

BEDROOM # 4
11'-10" X 14'-5"

WALK-IN (#1)
6'-3" X 6'-6"

WALK-IN (#2)
8'-0" X 4'-1"

WALK-IN (#3)
4'-1" X 7'-5"

WALK-IN (#4)
7'-6" X 5'-1"

LAUNDRY (2nd)
8'-0" X 6'-4"